

# October 24, 2010

Rice, Texas



March 3, 2016

[www.weather.gov/fortworth](http://www.weather.gov/fortworth)



# Strong Updrafts

Photographer  
Location 

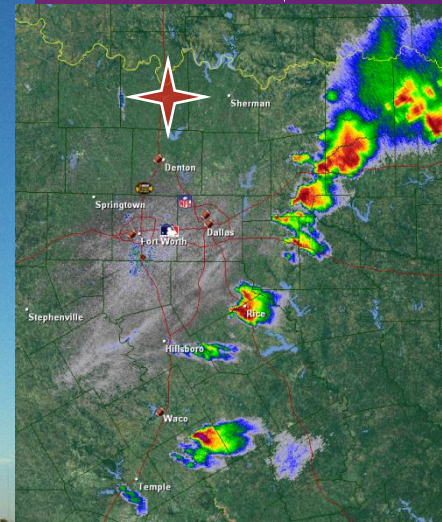


Photo: Ray Fletcher  
Looking Southeast: 105 miles

March 3, 2016

[www.weather.gov/fortworth](http://www.weather.gov/fortworth)

# Strong Updrafts

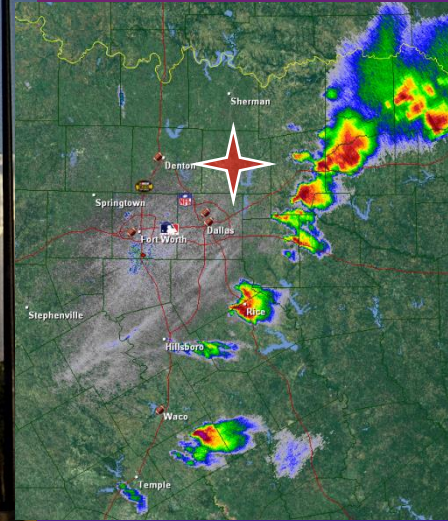


Photo: Shane Stovall  
Looking South: 50 miles

# Mid Level Clues

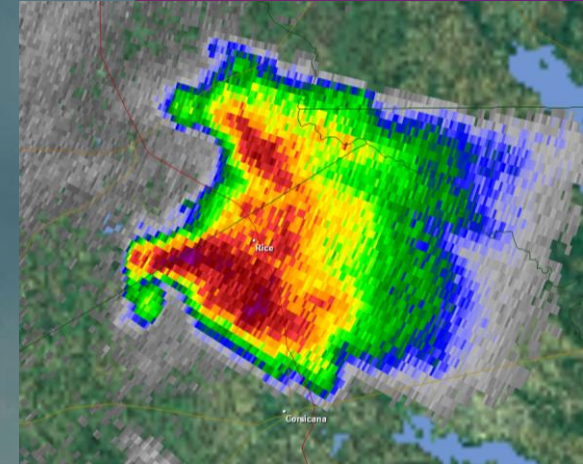


Photo: Stephen Levine  
Looking Southeast: 20 miles

March 3, 2016

[www.weather.gov/fortworth](http://www.weather.gov/fortworth)

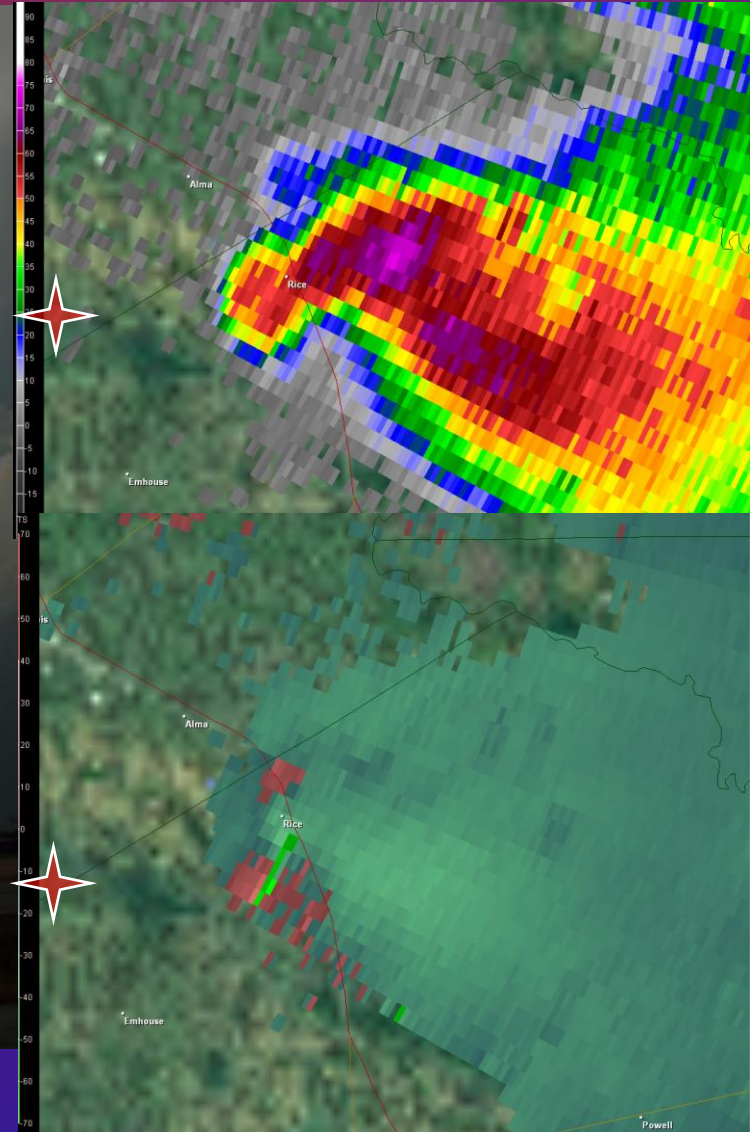
# Mid Level Clues



Copyright 2010, Stephen Eric Levine

Photo: Stephen Levine  
Looking East: 5 miles

March 3, 2016



[www.weather.gov/fortworth](http://www.weather.gov/fortworth)

# Low Level Clues

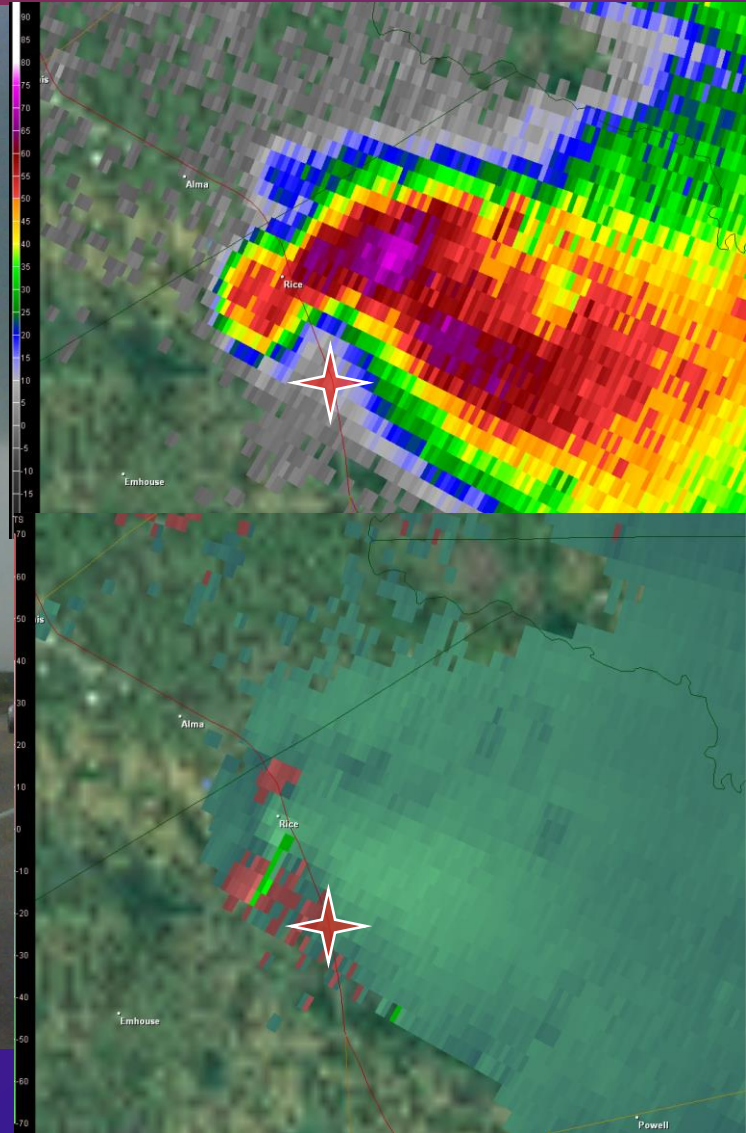


Photo: Chadwick Stelzl  
Looking Northwest: 2 miles

[www.weather.gov/fortworth](http://www.weather.gov/fortworth)

# Low Level Clues

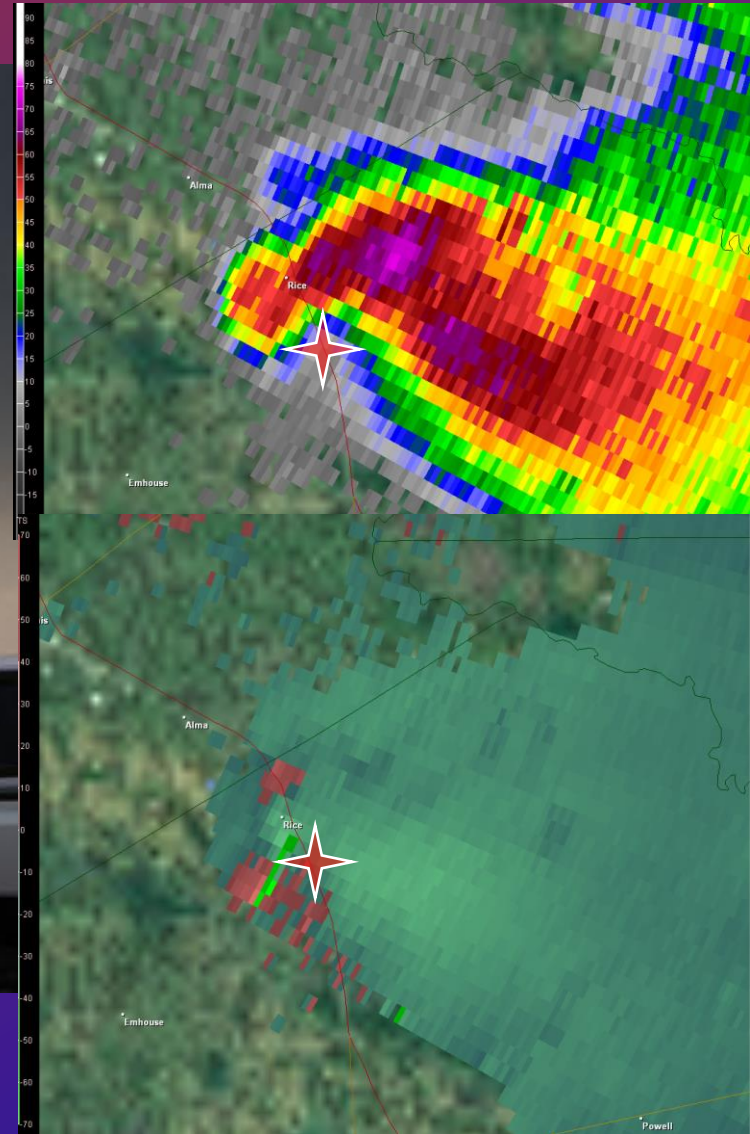


Photo: Eric R. Meyers  
Looking West: 1 mile

March 3, 2016

[www.weather.gov/fortworth](http://www.weather.gov/fortworth)

# Low Level Clues

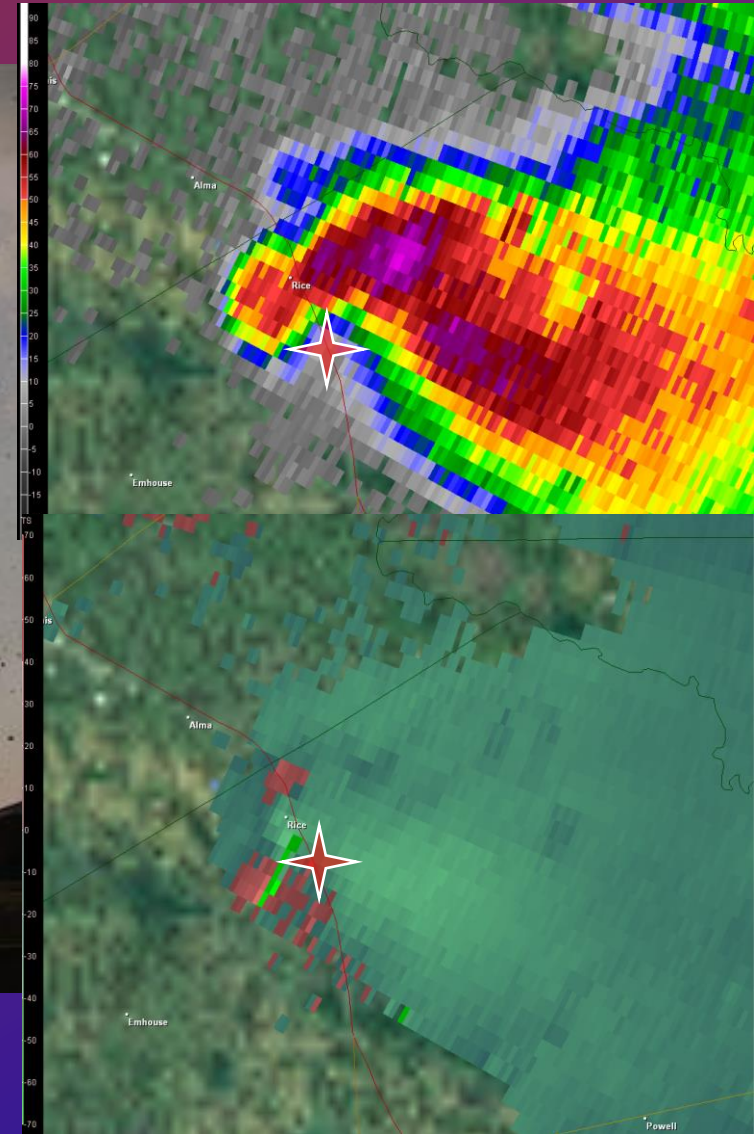


Photo: Eric R. Meyers  
Looking West: 1 mile (WTDC)

March 3, 2016

[www.weather.gov/fortworth](http://www.weather.gov/fortworth)



# Low Level Clues

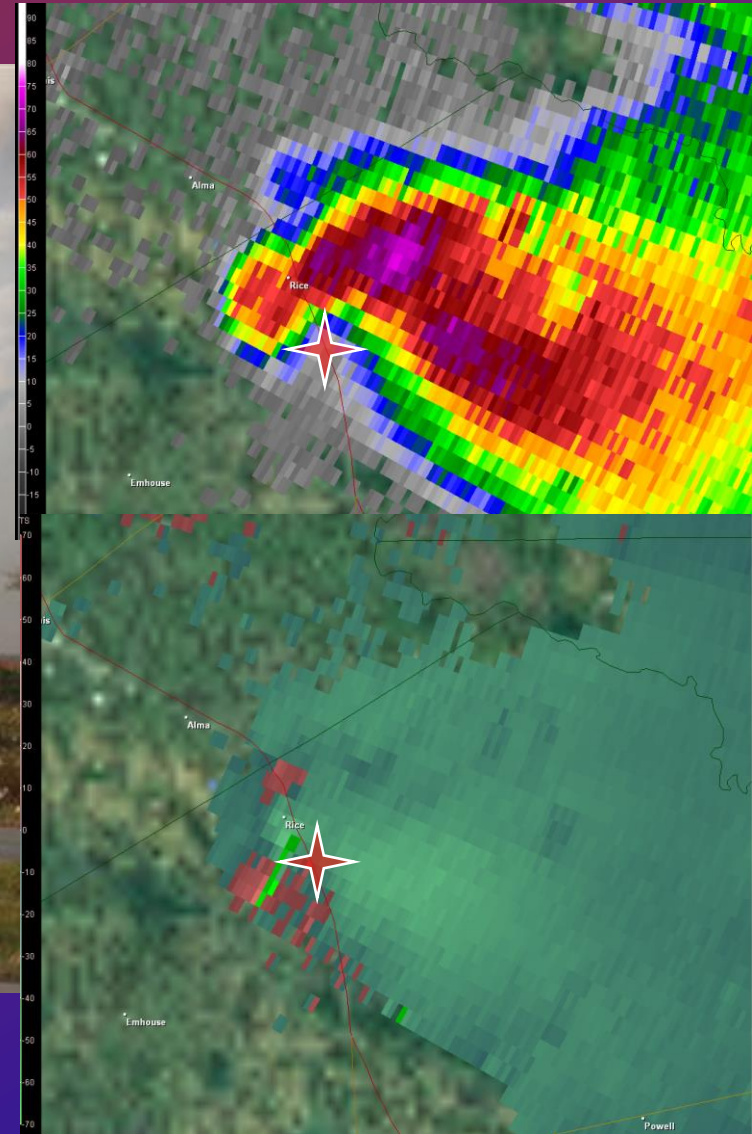


Photo: Eric R. Meyers  
Looking Northeast: 1 mile (WTDC)

March 3, 2016

[www.weather.gov/fortworth](http://www.weather.gov/fortworth)

# Low Level Clues

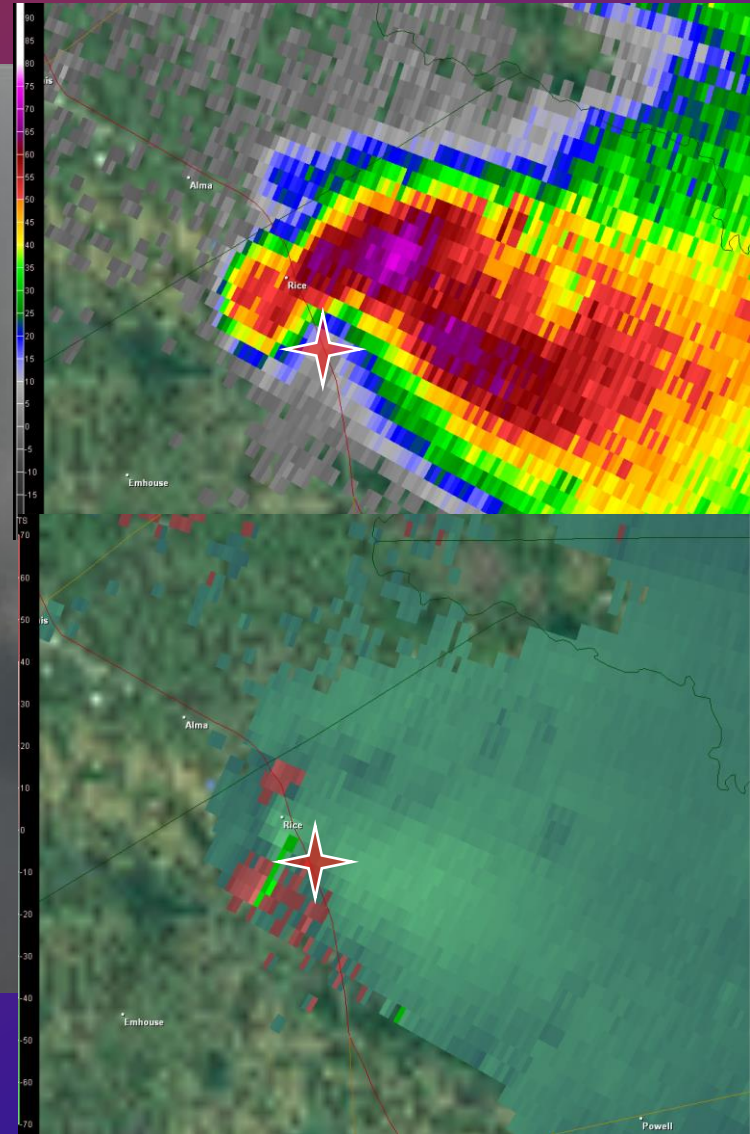


Photo: Eric R. Meyers  
Looking Northeast: 1 mile (WTDC)

March 3, 2016

[www.weather.gov/fortworth](http://www.weather.gov/fortworth)